



Nuova Rade

Marine - Plastics Technology Experts

ZEFIRO

Waste Water Tank

Instruction Manual



196881

**ZEFIRO Tank Waste
Water 40L Vertical**

196882

**ZEFIRO Tank Waste
Water 60L Vertical**

Manufactured in accordance with ISO 8099.

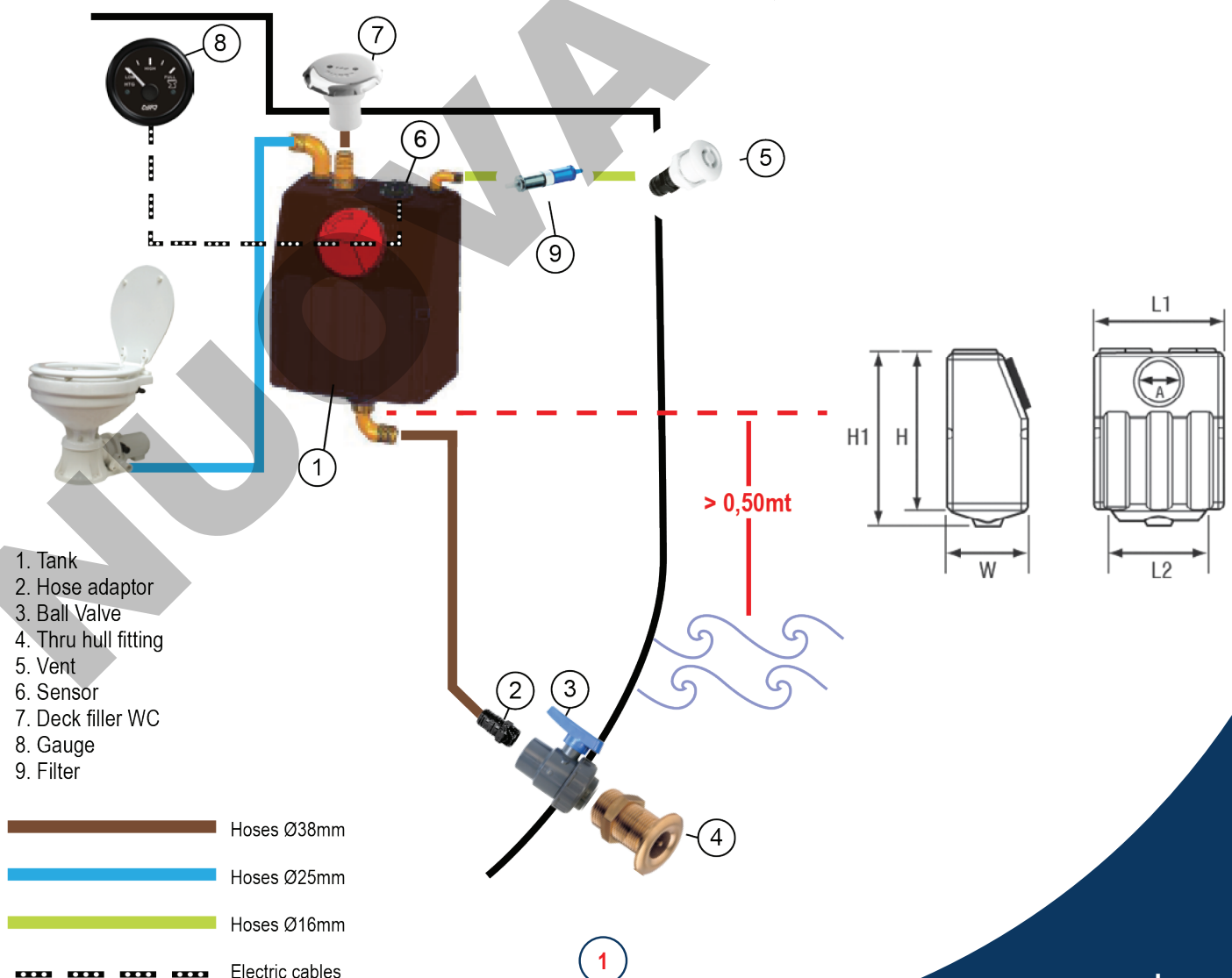
Installation Scheme

The ZEFIRO Waste Water Tank is made from odour-free high-density polyethylene (HDPE) and is shaped in order to allow effective discharge. It is compatible with diaphragm pumps and macerators (12 or 24 V) and it is supplied with:

- 1 inlet and 2 outlets Ø 38 mm-G 1 1/2"
- 1 vent Ø 25 mm-G 3/4 "
- 1 inspection hatch: Ø127 mm
- Plate compatible with VDO standard sensors

When installation is carried out at more than 0,5 m above the waterline, the tank can be emptied without a pump and it can be mounted on a bulkhead. Accessories/Spare Parts available for this product are: **sensor, gauge, vented loop, ball valve, filter, deck filler**.

Installation Example



Available Accessories/Spare Parts

1. **Tank:** ZEFIRO Tank Waste Water 40L Vertical (**Code: 196881**)
ZEFIRO Tank Waste Water 60L Vertical (**Code: 196882**)
 2. **Hose Adaptor:** Connector Str.G1"1/4, Ø38 mm, Male, BLIZZ.-BORA-ZEF (**Code: 196913**)
 3. **Ball Valve:** Ball Valve 1 1/4", Single Union BSPT, Plastic, Grey (**Code: 44672**)
 4. **Thru-Hull Fitting:** Thru-Hull Fitting 1 1/4",w/ Washer, L98 mm, White, ISO (**Code: 198219**)
 5. **Vent:** Ventilator for tanks (round or oval): (**Code 37330-1, 31515 and 31517**)
 6. **Sensor:** for 40L tank: Sensor for Fresh Water & Waste Tanks, 240-33 Ohm,H.480 mm (**Code: 196909**)
for 60L tank: Sensor for Fresh Water & Waste Tanks, 240-33 Ohm,H.690 mm (**Code: 196910**)
 7. **Deck Filler WC:** INOX Deck Filler Ø38 mm, with Brown Cap, for Waste Water, Black Base (**Code: 198160**)
 8. **Gauge:** Waste Level Gauge, 240-33 Ohm (**Code: 197346**)
 9. **Filter:** Bio-Carbon filter for Tanks, Ø16-19 mm (**Code: 51732**)
- *Optional Anti-vent loop: Anti-vent loop connection, 1,9 cm (**Code: 90184**)
Anti-vent loop connection, 3,8 cm (**Code: 90185**)

For further information, please visit www.nuovarade.com

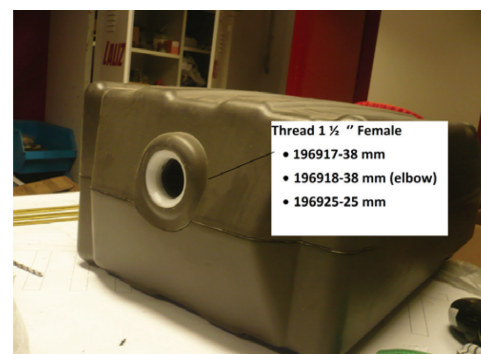
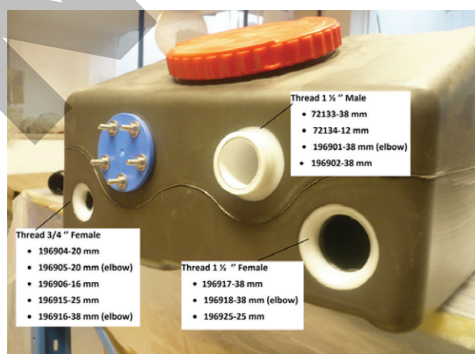
Installation

Warning! For correct installation, please refer to ISO 8099 Norm.

1. Connectors' Fitting

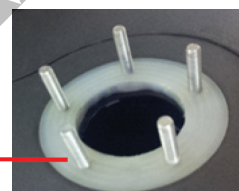
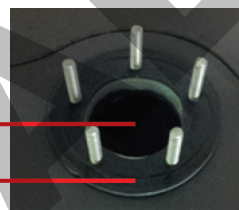
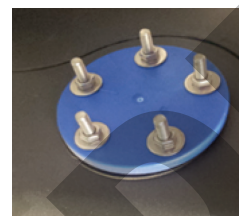
The thread of the compatible connectors can be found in the image as shown below.

The included and the optional connectors can be found in the following link: [Fitting Connectors included & optional](#)



2. Sender Assembly

The tank is supplied with a 5-holes flange (SAE-5 standard) to host a sender. We recommend to always use the suitable gasket to assure a proper seal.



Hole for sensor

Rubber gasket included

Pre-installed screws

*Warning!

Any damages occurred during assembly process might compromise the correct operation of the tank.

Use and Maintenance

ZEFIRO Waste Water Tank requires proper use and maintenance in order to ensure correct and regular operation.. Please note some fundamental rules to be followed in the event of operation problems:

- Make sure that the tank is regularly discharged to prevent overpressure. The tank has been designed and manufactured to support a maximum pressure of **0,2 bar**.
- Make sure that the tank is empty and clean at the end of the season and before winter storage. **WARNING! Be sure that the gasket is clean and intact before installing the sender. Nuts must be hand-screwed by using a wrench at a driving torque < 2Nm, so as to avoid irretrievable damages to the tank.**
- The tank must be installed allowing inspection and maintenance of the accessories, pipe connections, pumps etc.