



Nuova Rade
Marine - Plastics Technology Experts

PRODUCT ANNOUNCEMENT

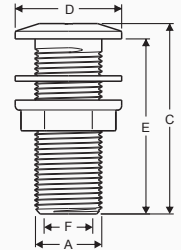
Thru-Hull Fittings

ISO 9093



Thru-Hull Fitting with Washer

Code	Colour	Thread Ø A (inch)*	Overall Length C (mm)	Flush Flange Ø D (mm)	Thread Length E (mm)	Int. Ø F (mm)	Optional Plug
198216	White	3/4"	81	47	75	16	-
198217	White	1"	87	52	80	23	45306 or 45309
198219	White	1 1/4"	98	62	90	30	-
198220	White	1 1/2"	98	75	90	36	45307
198222	White	2"	110	90	100	45	-

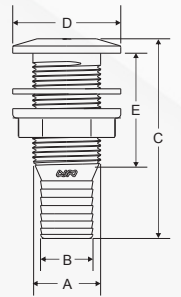


NEW



Thru-Hull Fitting with Washer and Hose Barb

Code	Colour	Thread Ø A (inch)*	Hose Ø B (mm)	Overall Length C (mm)	Flush Flange Ø D (mm)	Thread Length E (mm)	Optional Plug
198225	White	3/4"	19	88	47	45	-
198226	White	1"	25	97	52	52	45309
198228	White	1 1/4"	32	107	62	53	-
198229	White	1 1/2"	38	107	75	53	45307
198231	White	2"	51	120	90	65	-



*According to BSP thread dimensions

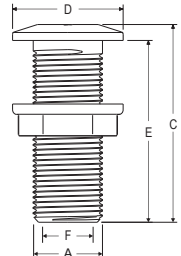
Material: Body & Nut: Glass reinforced PA, Washer: PA

Upgraded design



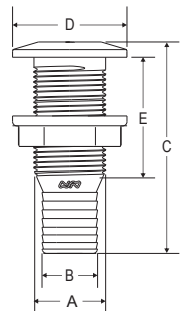
Thru-Hull Fitting

Code	Colour	Thread Ø A (inch)*	Overall Length C (mm)	Flush Flange Ø D (mm)	Thread Length E (mm)	Int. Ø F (mm)	Optional Plug
44737	White	1/2"	74	40	66	15	-
14186	White	3/4"	77	44	70	19	-
44740	White	3/4"	81	47	75	16	-
44743	White	1"	87	52	80	23	45306 or 45309
198218	White	1 1/4"	98	62	90	30	-
44746	White	1 1/2"	98	75	90	36	45307
198221	White	2"	110	90	100	45	-



Thru-Hull Fitting with Hose Barb

Code	Colour	Thread Ø A (inch)*	Hose Ø B (mm)	Overall Length C (mm)	Flush Flange Ø D (mm)	Thread Length E (mm)	Optional Plug
44696	White	5/8"	15	75	43	40	-
198223	White	1/2"	14	85	40	39	-
44705	White	3/4"	19	88	47	45	-
44714	White	1"	25	97	52	52	45309
198227	White	1 1/4"	32	107	62	53	-
44729	White	1 1/2"	32	102	76	55	-
44735	White	1 1/2"	32	102	76	65	45307
44723	White	1 1/2"	38	107	75	53	-
198230	White	2"	51	120	90	65	-



*According to BSP thread dimensions

Material: Body & Nut: PA

Made in Italy



Optional Plugs



45309



45307



45306

www.nuovarade.com