

# MAX

P O W E R

CONTROL TO THE MAX

*NEW SERIES*



 **ECO** PROPORTIONAL

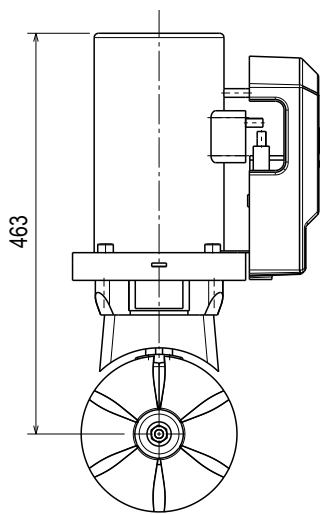
[www.max-power.com](http://www.max-power.com)

**NEW SERIES**

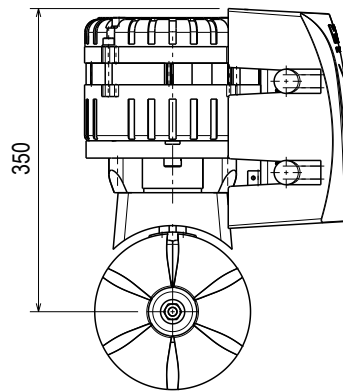
# **PROPORTIONAL**

- ECO FRIENDLY
- FULLY PROPORTIONAL CONTROL
- UNLIMITED RUNTIME\*
- COMPACT AND LIGHTWEIGHT

## Conventional Thrusters



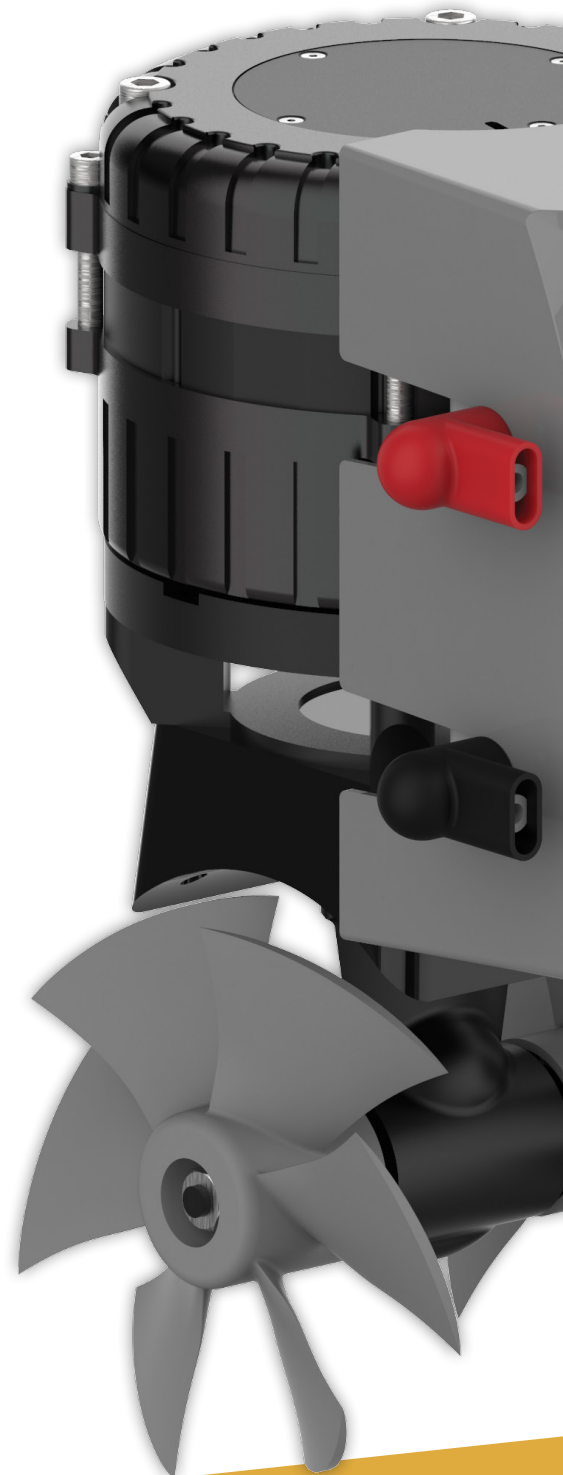
## ECO PRO



Dimensions (mm)

\*Until the battery runs out

Made in EU





- Improved performance and efficiency
- Longer lifespan and minimised maintenance
- Smoother and quieter operation, enhancing safety and comfort of crew and passengers
- Eco-friendliness resulting from reduced power consumption
- Compatibility and easy integration into existing thrusters
- Remote troubleshooting

**BACKED BY OUR TEAM OF EXPERTS**  
for installation, maintenance, and repair services

### Included

#### Proportional Joystick

Precise accuracy  
with new joystick



#### Application

Modern mobile  
application for  
monitoring

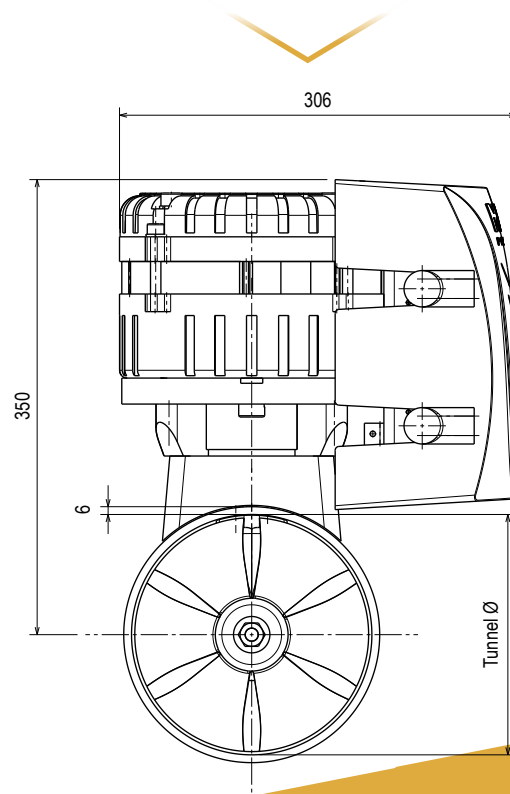


# **ECO** PROPORTIONAL



**MAX**  
POWER  
CONTROL TO THE MAX

Dimensions (mm)



Model	ECO-PRO 90	ECO-PRO 110	ECO-PRO 130	ECO-PRO 150
Code	636674	636675	636676	636763
Voltage (V)	24	24	48	24
Thrust (Kg)	90	110	130	145
Propellers	Duo	Duo	Duo	Duo
Power (KW/hp)	5,3 / 7,1	6 / 8	8 / 10,7	9,5 / 13
Drive Leg (material)	Composite	Composite	Composite	Bronze
Tunnel Ø (mm)	185	185	185	250
Boat type	Boat Length (Feet/Metres)			
Heavy Displacement High Windage Cruising	28'-35' / 6-10,6m	32'-40' / 9,7-12m	35'-46' / 10,6-14m	37,0' - 48,0' / 11,3 - 14,6m
Medium Displacement Medium Windage Fast Cruising	30'-40' / 9-12m	36'-48' / 11-14,6m	42'-55,5' / 12,8-17m	44,0' - 57,5' / 13,4 - 18,0m
Light Displacement Light Windage Super Fast Cruising	33'-46' / 10-14m	39'-51' / 11,8-15,5m	46'-60' / 14-18m	48,0' - 62,0' / 14,5 - 19,0m